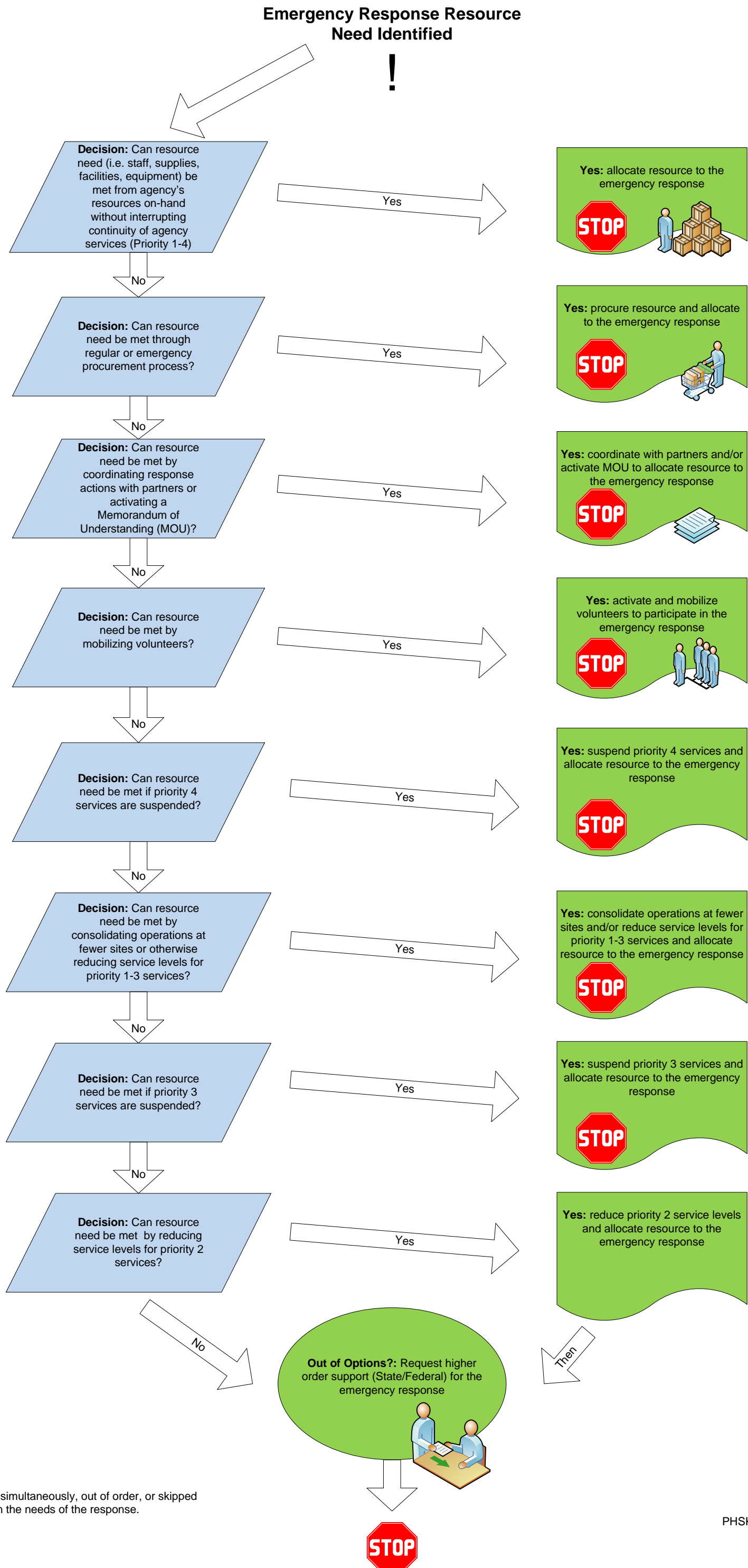


Decision making protocol for balancing emergency response resource needs with continuity of mission-critical services

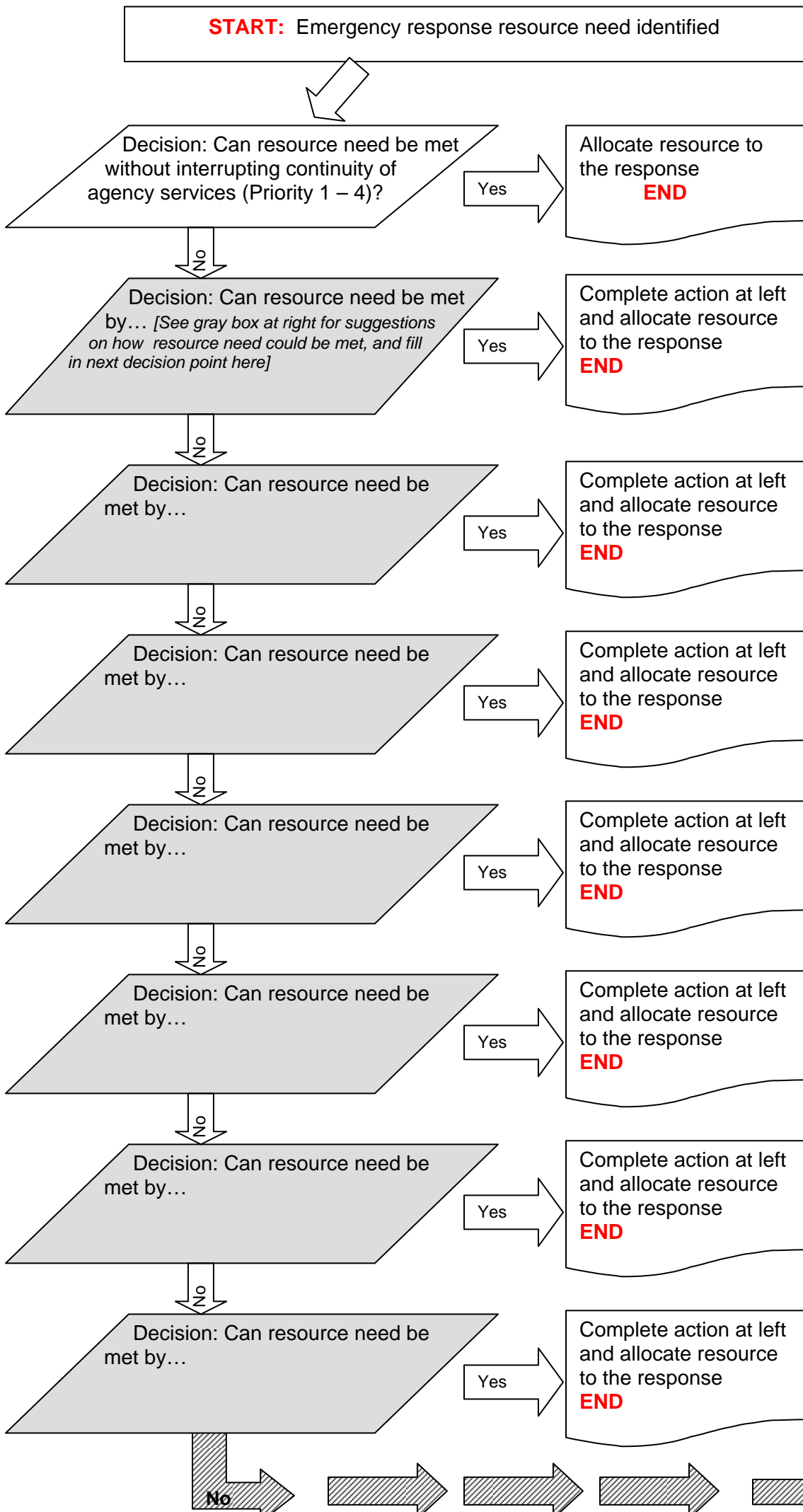


* Steps may be pursued simultaneously, out of order, or skipped depending on the needs of the response.

Decision Making Model

“Can my agency continue to deliver mission-critical services in an emergency? What resources support mission-critical services? Can resources be re-directed to the response?”

Work through the flow chart below to begin to consider if resources (i.e. staff, volunteers, existing services) can be put toward an emergency response or need to remain assigned to critical services.



Instructions:
Fill in the gray shaded boxes based on the decision making model at your agency.

Decision points to consider:

- Activation of COOP plan
- Regular or emergency procurement
- Leveraging partnerships
- Activation of MOUs
- Mobilization of volunteers
- Suspension of lower priority services
- Reduction of service levels
- Consolidation of operations at fewer sites
- Requesting higher order support (State/Federal)
- Add your own!

Additional Decision Points:
